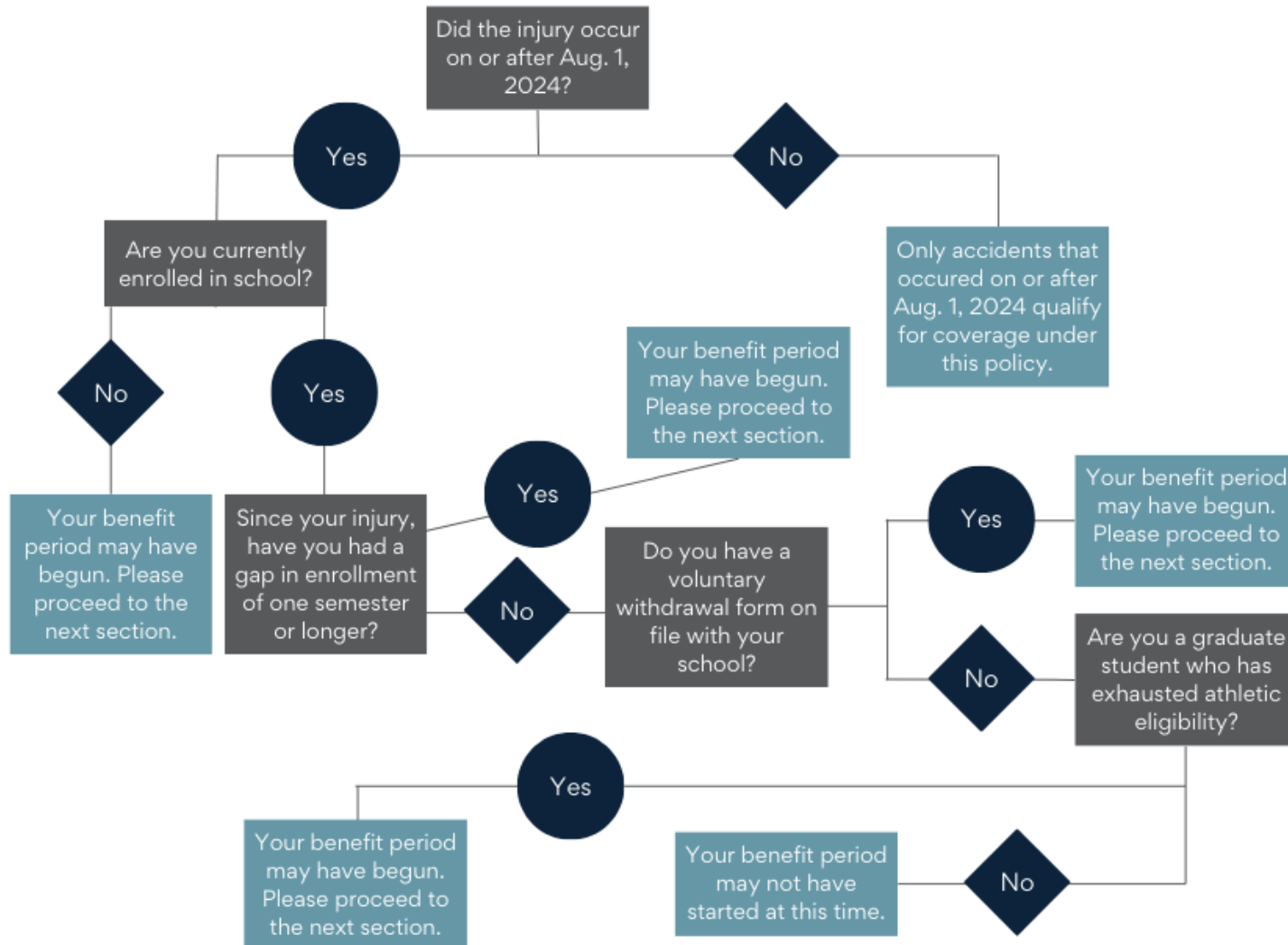


NCAA POST-ELIGIBILITY INSURANCE: DETERMINE IF YOU ARE READY TO FILE A CLAIM

Medical expenses that are incurred during the benefit period for covered injuries may be reimbursed by filing a claim. A covered injury is one which occurs during participation in an NCAA qualifying intercollegiate sport. Your benefit period begins on the date you separate from school or formally voluntarily withdraw* from athletics, whichever comes first. Before submitting a claim, determine if your benefit period has begun by using the decision tree below.



1. If you believe your benefit period has begun, the [Incident Report Form](#) should be fully completed and submitted with any relevant supporting documents to begin the claim process. This can occur at the start of the benefit period if you anticipate treatment or as treatment is being administered.
2. Expenses incurred before or after your benefit period are not eligible for coverage under this policy at this time.
3. Items you will need to complete the Incident Report Form:
 - Other insurance information (Name of Insurance Company and Policy Number).
 - Contact information for the athletic department of the school you attended at the time of the injury.
 - Dates of:
 - Injury
 - Initial treatment
 - Last day enrolled in school (if not longer enrolled)
 - Expiration of athletic eligibility (graduate students)
 - If applicable, a copy of your voluntary withdrawal form.

*For the purposes of this policy, “voluntarily withdraw” means submission of a formal voluntary withdrawal form from the student-athlete with no intent to transfer to and resume intercollegiate sport/activities at another school.